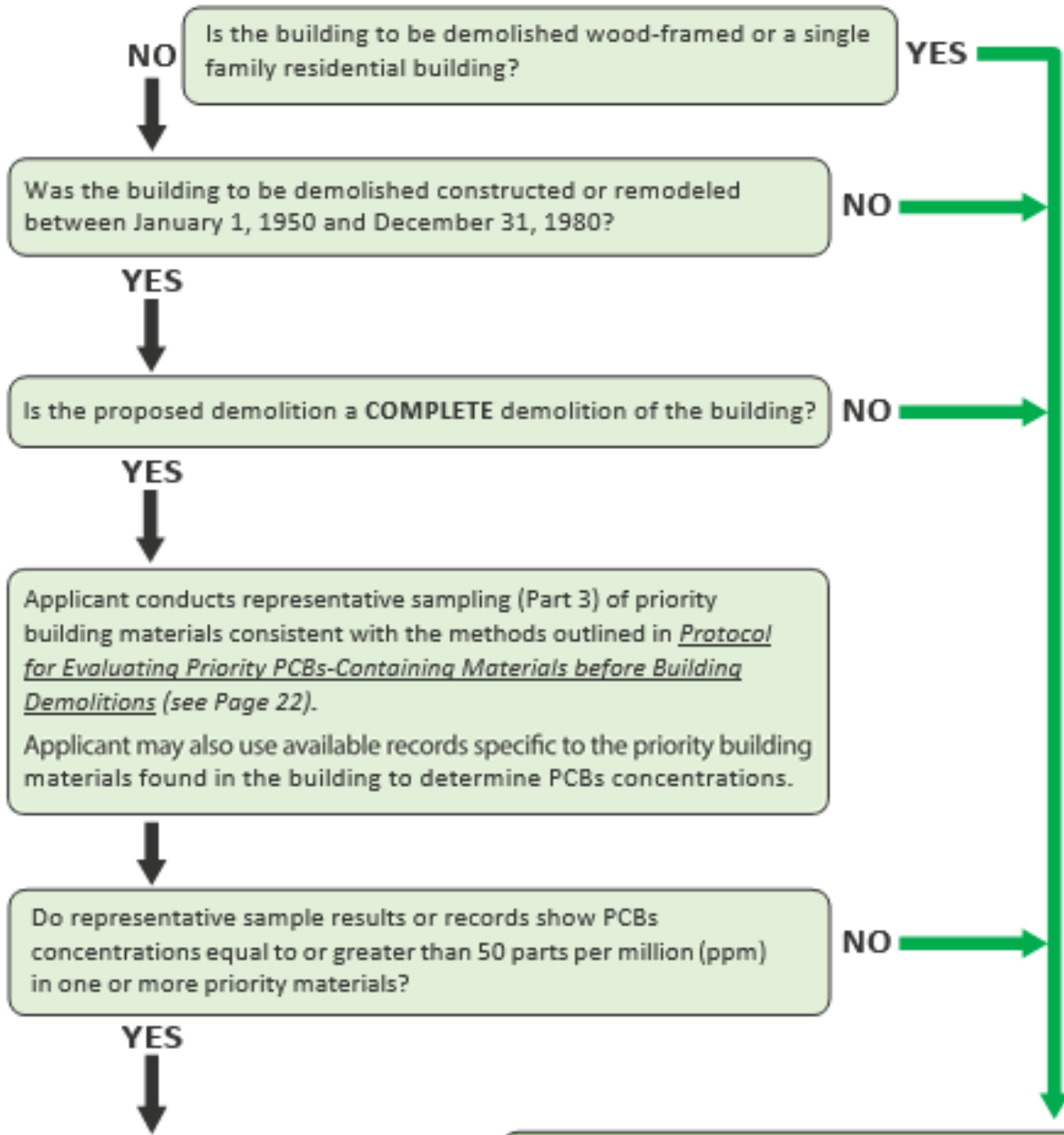


PCBs Screening Assessment Flowchart

PCBs screening assessment must be completed before a demolition is authorized.



POSITIVE SCREENING
Applicant submits completed Screening Assessment Form (Parts 1-4) to municipality. Municipality issues demolition permit in accordance with municipal procedures. Applicant follows applicable federal and state requirements for notification and abatement (see *Notice to Applicants for important additional information*).

Complete applicable Parts of the PCBs Screening Assessment Form. Building does not require screening for PCBs (Part 3) **or** screening results did not identify PCB concentrations equal to or greater than 50 ppm (see *Notice to Applicants for important additional information*).
SUBMIT completed Screening Assessment Form to municipality. Municipality issues demolition permit in accordance with municipal procedures.